



From the Process Model Directly to Execution

High level of agility, with assured compliance and fast ROI

Metasonic® Flow is the Metasonic® Suite* execution tool, the only process management tool based on subject-oriented business process management (S-BPM). S-BPM paves the way for business processes that can be put into practice immediately. With Metasonic® Flow, an executable application for workflow control is automatically generated out of the business process description.

This means that without writing a single line of code, employees can immediately carry out their own self-described process models.

Simple & transparent process control

The user logged on (Single-Sign-On) to the process portal has a transparent overview of all active and inactive processes as well as the activities that must be dealt with.

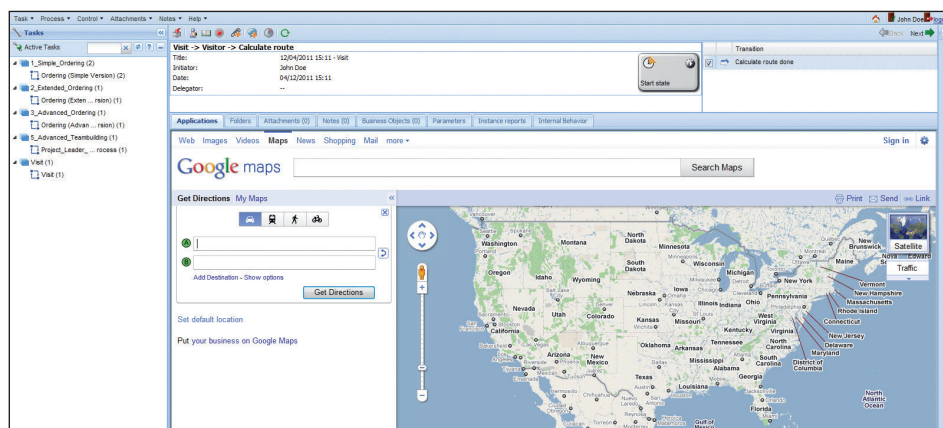
All information, documents and applications necessary to carry out their tasks are available at exactly the right time. Any IT platform or web application server can be used. Metasonic® Flow does not work with images that only experts understand, but rather leads the employee through his processes in a structured way.

With the revolutionary S-BPM approach, suggestions for improvements and/or necessary process changes can be implemented quickly and easily by the individual business departments themselves. The new process model is loaded to the portal at runtime with the push of a button.

The IT department is thus freed from this task and now serves as a business enabler with the focus on providing a seamless IT infrastructure. This is possible because all participants - IT, organizational or business department - work with only one model in one single language.

Advantages:

- Each employee sees his tasks and is led through the process in a structured way.
- Competencies and responsibilities are very clearly defined.
- Subjects can be run on various IT platforms.
- All tasks can be displayed as RSS feeds and/or in the Internet browser, and can be integrated with Outlook.
- Timeouts during critical processes set off an alarm.
- From the very start, compliance is integrated into the processes and put into practice (active compliance management).
- High degree of employee motivation through high degree of transparency and harmonious communication flow.



All information, documents and applications are available at exactly the right time.

*The Metasonic® Suite consists of Metasonic® Base, Build, Proof and Flow.

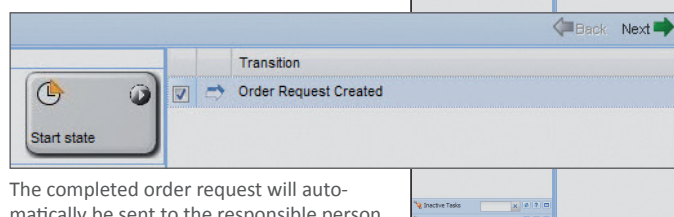


Dynamic data management

Business objects (BOs) are integrated into the Metasonic® Flow environment. They represent containers for data that are used within the process and serve as a connector to external data bases. Outstanding feature: The BOs introduce dynamic data management to your processes. This is possible only through clear separation of business logic, data structure and frontend layout. Consequently, the user can model his processes based on the business needs, independent of static data models. The result: High flexibility and fast response time in case of changes.

Real-time collaboration

After the process models have been created in Metasonic® Build (the Metasonic Suite modeling tool) and interactively tested by the business with Metasonic® Proof (the Metasonic Suite validation tool), they are automatically loaded to the Metasonic® Flow process portal and directly executed as applications. By using form technologies, integrating Web services and using web robots, all necessary IT services can be orchestrated from the existing IT landscape. Process rules analyze data dynamically, control decisions automatically or support the user through a preselection. Persons without direct access to Metasonic® Flow can also be linked to business processes. An e-mail interface makes it possible to connect to smart devices of all kinds. Using an Internet browser, employees can communicate all required information seamlessly and without time delays via the process portal.



The completed order request will automatically be sent to the responsible person.

Do it yourself!

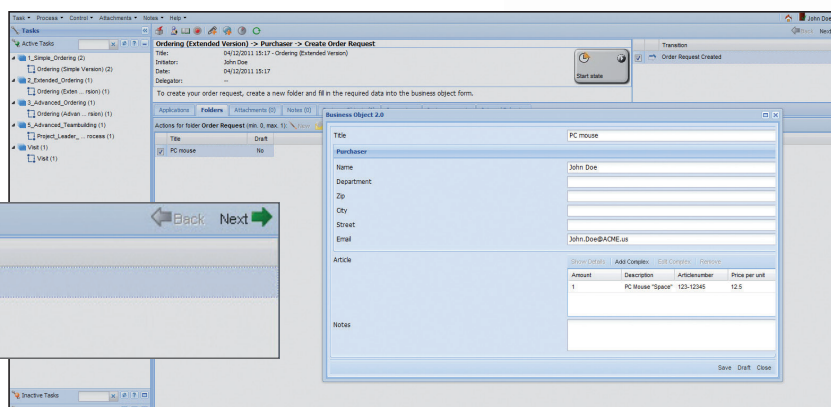
If additional applications or process changes are necessary, the employees can create them themselves using Metasonic® Build and execute them directly from the process model (model = execution). Expensive programming, which is required by traditional workflow systems at this point, is not necessary. The Metasonic® Flow interface is made up of a variety of components, which makes work easy. Customers themselves can customize these components freely within a master layout.

Clear structure & responsibility

Using process management functions, various levels of authorization can be defined for each employee. This means that employees can see and start only the processes they are authorized to see. Process steps that have already been started and that fall within their area of responsibility can be completed immediately. An LDAP-based User Manager is provided for the central administration of users, roles, role properties (e.g. login information), and the assignments between them. In this way, subjects (i.e. the acting agents in the process) can be consolidated into roles, which can be assigned to departments and employee groups within the organization.

Benefits:

- Transparency and simplicity provide employees with certainty and motivate them to constantly optimize processes.
- Clear assignment of all process steps (process model = documentation).
- Very fast, real-time process and application adaptation is possible.
- Very flexible way of working independent of location.
- High process quality guaranteed.
- Processes are a compliance tool and guarantee strict adherence to all specifications and rules.
- Increased agility and faster response time on changes.
- Significant time and cost savings.



Metasonic® Flow surface with business object shown (here: order request).